

SegWAY

ORTHOPAEDICS, INC.

**INCREASED
SAFETY AND
REDUCED
RECOVERY**

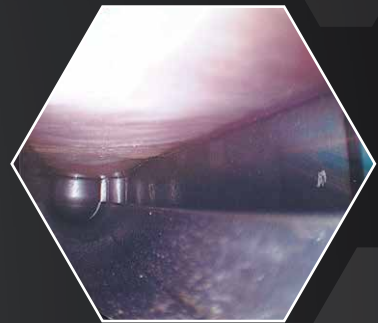


Endoscopic Plantar Fasciitis Release (EPF)

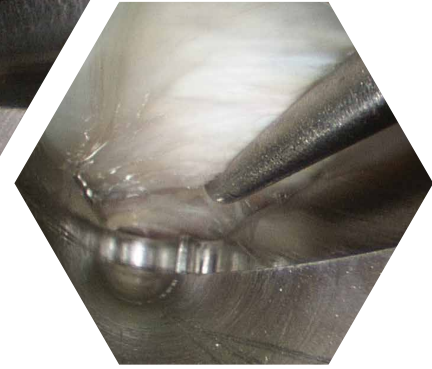
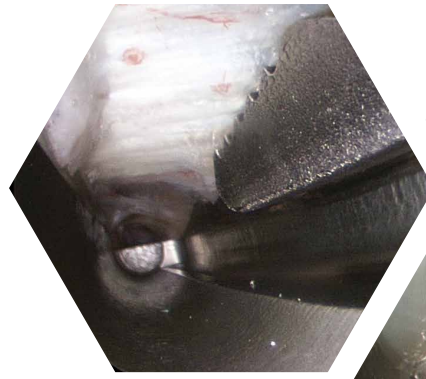
Our Unique SegWAY™ Endoscopic System gives you greater control and unparalleled visualization. It delivers the tactile feel of an endoscopic scalpel in a minimally invasive approach that can help reduce the lengthy recovery time associated with these types of surgeries. Unlike most competitive systems, the scope functions independently from the knife, rasp and probe providing ultimate system flexibility.

FEATURES AND BENEFITS

- > **Uni-Minimal incision (8mm-10mm)**
- > **Minimal tissue damage (insertion of guide as far as needed)**
- > **Faster surgery time (2 to 5 min)**
- > **Patient is up and walking next day**
- > **Left and Right guide for blade handling preference.**
- > **3x the field of view.**
- > **Tactile knife & Probe**
- > **System utilizes a standard 4mm 30° scope or 2.7mm 30°**



Where Tradition Meets Innovative Technology



Left and Right guide for blade handling preference.



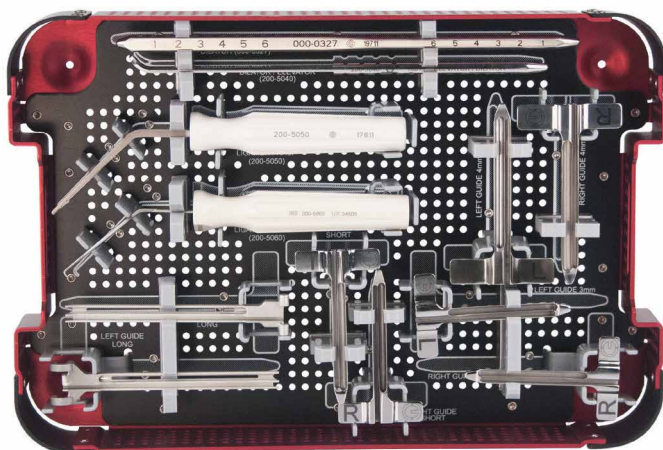
PROBE for a safe release



Independent retrograde Knife operation



RASP to better visualization before release



PRODUCT LINE INFORMATION

Description	Part #
SegWAY Instrument Set (Complete Set)	200-5560
Left Medium SS Knife Guide (4mm)	200-5012
Right Medium SS Knife Guide (4mm)	200-5022
Left Small SS Knife Guide (2.7mm)	200-5014
Right Small SS Knife Guide (2.7mm)	200-5024
Left Large SS Knife Guide (4mm)	200-5010
Upper ECuTR Guide (4.0mm long)	200-6041
Lower ECuTR Guide (4.0mm long)	200-6042
Synovial Dilator / Elevator	200-5040
Rasp, Ligament	200-5050
Probe, Ligament	200-5060
Dilator	000-0327
Retrograde Ligament Knife (SINGLE USE)	200-1003
Antegrade Ligament Knife (SINGLE USE)	200-1006